

encore

GT211X

High
Speed
Data
Communicator



ThingsNET®



- General Telemetry and Control
- Remote & Locally Configurable
- Supports Multiple Protocols



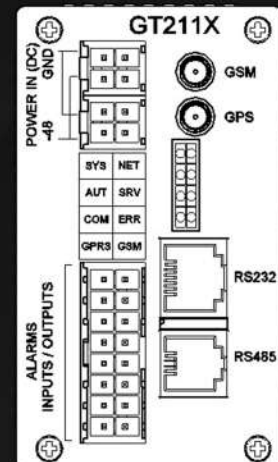
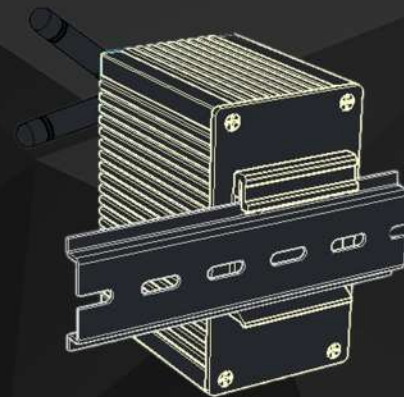
High Speed Data Communicator

Specifications

Model	GT211X
Input Power	12 VDC
Processor Environment	Low Power Consumption CPU
Power Consumption	4.8W (searching GPRS), <1.2W (idle)
Operating Voltage	9VDC ~ 36VDC
Accuracy	99% Full Scale Output (Over Temperature Range -20°C ~ 85°C)
Configuration	Through Remote & Local Interface
Protocol	Proprietary (Customization Upon Request)
User interface	Simple LED Based
Firmware Upgrade	Proprietary Interface
Interface	RS-232 x 1 & RS485 x 1 Dry Contact Digital Input x 4 Dry Contact Digital Output x 4 Analog Voltage Sensing x 3 (Internal Use)
Receiver	L1, 1575.42MHz, C/A Code Max. Update Rate 1Hz, 12Channels
Accuracy Position	<10 meters at 2D RMS SBAS; <7 meters at 2D RMS, WAAS Corrected Built-in WAAS/EGNOS Demodulator
Datum	WGS-84
Acquisition Rate	Cold/Warm/Hot Start: 42/38/1 sec (Average)
NMEA Protocol	GLL, GGA, RMC, VTG, GSV, GSA
GPRS Multi-slot	Class 10
GPRS Mobile Station	Class B
Download/Upload	85.6Kbps/21.4Kbps
Code Scheme	CS1, CS2, CS3, CS4
Operating Temperature	-20°C ~ 85°C
Storage Temperature	-40°C ~ 125°C
Humidity	5% ~ 95% RH (Non-Condensing)
Dimensions	Dimensions H: 95mm, W: 55mm, D: 80mm
Weight (g)	400g
SIM Card Holder	3V/5V
Antenna Connector	SMA F External
Mounting	Std. DIN-RAIL

Features

- General Purpose Telemetry
- GPRS/TCP/IP & GPS Enabled
- Technical Specifications
Complies with the 3GPP Ts 05.05
- Remote & Locally Configurable
- Supports Multiple Protocols
- Multiple Device Connectivity
- M2M Connectivity



Due to Continuous improvement programs, specifications are subject to Change Without Notice



"*Encore ThingsNET* provides easy-to-use visibility and control options; which makes us capable of providing the most perfect corporate solutions by maximizing service efficiency. Our prized RMS is a complete IOT solution that brings together people, processes, data and things; to make networked connections more relevant and valuable than ever before!"



"*Encore StoreBOX* provides incomparable longevity and optimization statistics. The embedded microcomputer intelligence, along with our sophisticated proprietary algorithm that goes in each unit, makes us stand out from the rest of the herd. With extensive R&D, we unravel storage solutions that are better than anything out there!"



"*Encore PoweredON* is the energy centric platform of our organization. Our smart product designs offer fully featured devices with the most efficiently designed footprints. Mixing this up with our state-of-the-art proprietary algorithm and our relentless R&D towards innovating renewable energy systems, we provide the most optimal power solutions."



Encore Solutions Pvt. Ltd.

Plaza 44-I, Street 26, Business Bay,
Sector F DHA Phase I,
Islamabad, Pakistan



info@encore.com.co



+92-300-5568248



+92-51-8730000